

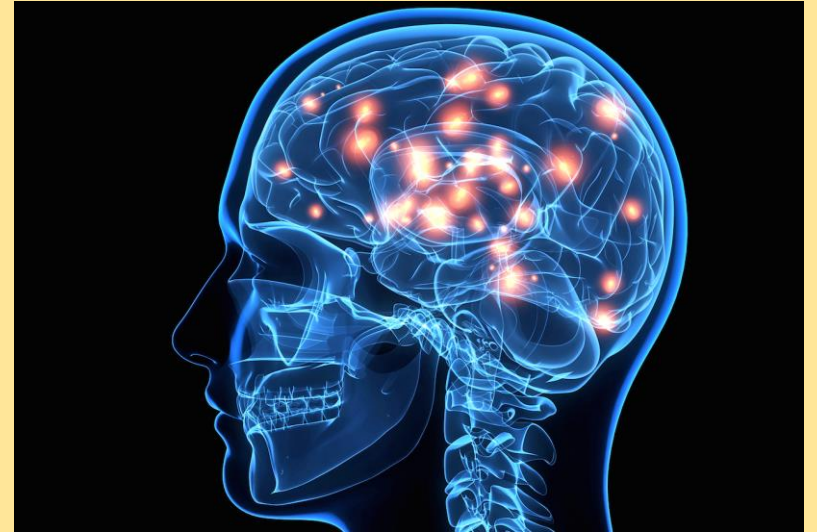
# Memory rooms and landscapes

## Great for:

- Key facts or quotations
- Visual learners, or people who like sketching/making collages
- Remembering when you are stressed - linking words and images  
LITERALLY makes stronger memory connections form in your brain

The basic idea of a memory room or landscape is that you create a strong visual for the topic and hide / embed key knowledge into the visual.

When you bring the visual into your mind, the knowledge comes with it.



Step 1: think of your topic. This works really well for literature texts, geography and history.

Step 2: Choose your main image and then add key images.

For example, the poem 'Exposure'



Step 3: Add key words into the image which trigger the rest of the meaning of the topic...

Step 4: commit the image to memory.

Can you remember the words?

You need to practice retrieving the knowledge and putting it back into your memory.

This is MUCH easier when you design the image and add your chosen words



Merciless

Air that  
shudders  
black

Nothing happens



Twitching agonies

Frost will fasten



# Have a go with one of these...

## MACBETH

- Can you imagine the inside of a castle Macbeth would live in?
- What would you have in your image to show he started as 'brave'?
- How could you embed the quotation *'Look like the innocent flower but be the serpent under't?'*
- What other key knowledge could you put into the image?

## An Inspector Calls

- Picture the Birlings' dining room.
- What key knowledge could you hide into the room about each character?

## Choose your own...